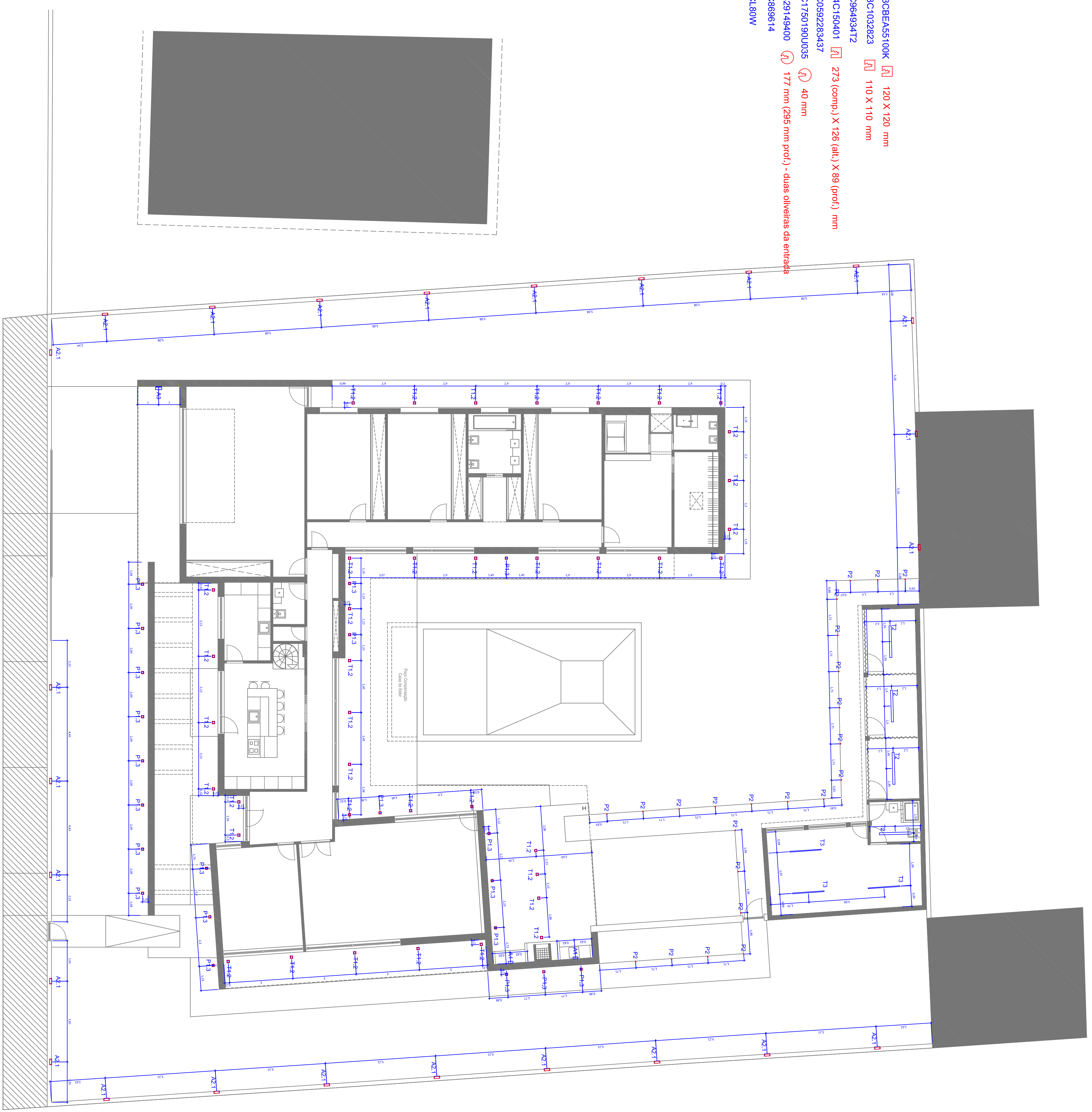


- P1.3 - 13CBEA55100K [L] 120 X 120 mm
- T1.2 - 13C1032823 [A] 110 X 110 mm
- A1 - 77C964934T2
- A2.1 - 44C150401 [L] 273 (comp.) X 126 (alt.) X 89 (prof.) mm
- A3 - 77C0592283437
- P2 - 55C1750190U035 [L] 40 mm
- P3 - 44529149400 [L] 177 mm (295 mm prof.) - duas oliveiras da entrada
- T2 - 33C869614
- T3 - 99CL80W



- A1.1 - 45C22111050  114 X 144 mm
- B - 445AR200QDPLNM  190 X 190 mm
- C - 15C092004
- D - 95CLINE80W  79 X 1486 mm
- E - 44C127300
- F - 99C187GU105W  90 mm
- H1 - 45C14561100  506 X 506 mm
- I - 99C185GU10BR  72 X 72 mm
- J - 33C869614
- K - Suspensão Led
- L - Perfil Led
- Y2 - Suspensão Led

